

De Dietrich C230 Eco-A Series Boiler Anchoring positions

Unisorb® anchor bolt
Anchor bolt [x6]

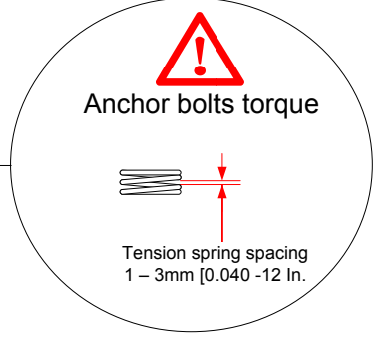
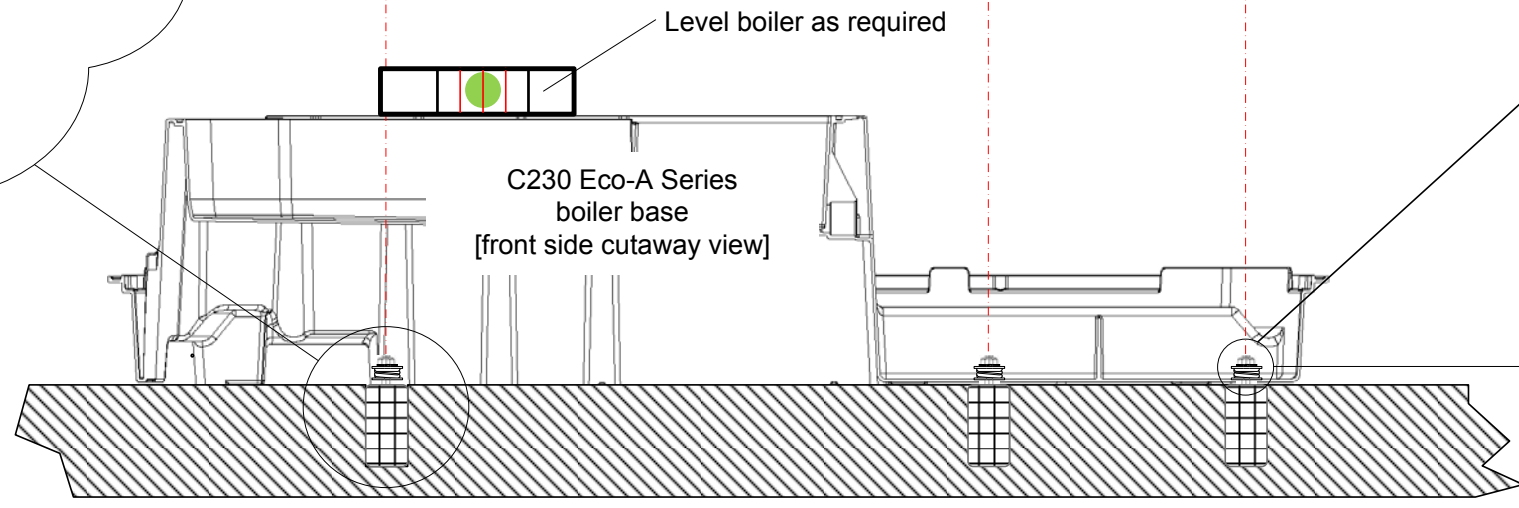
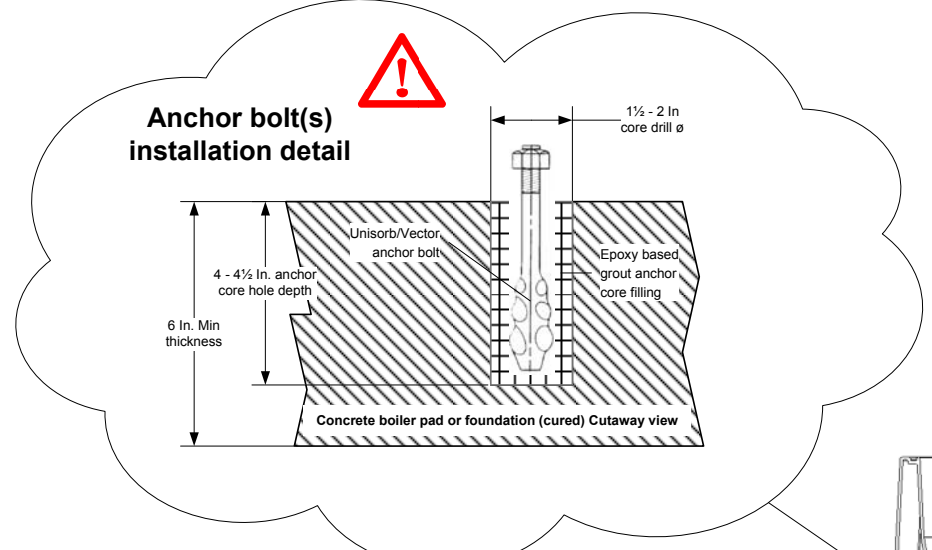
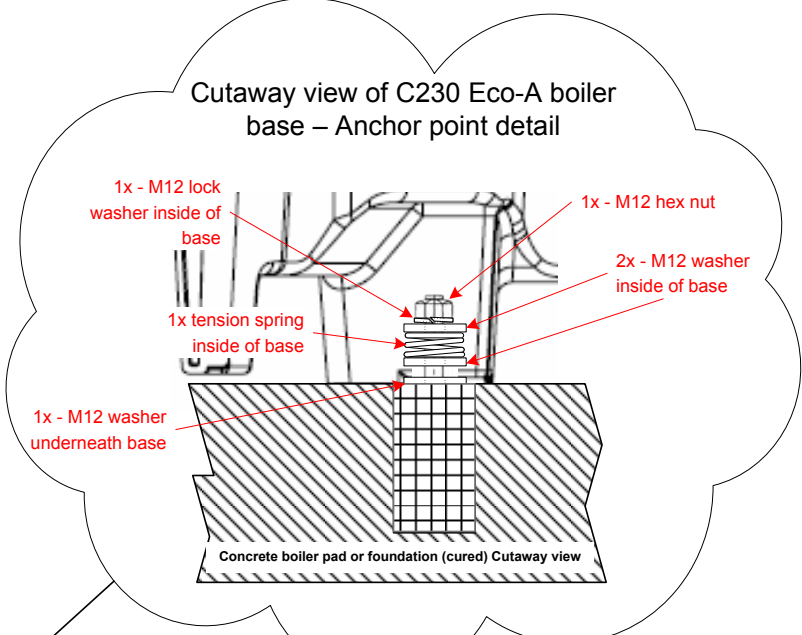
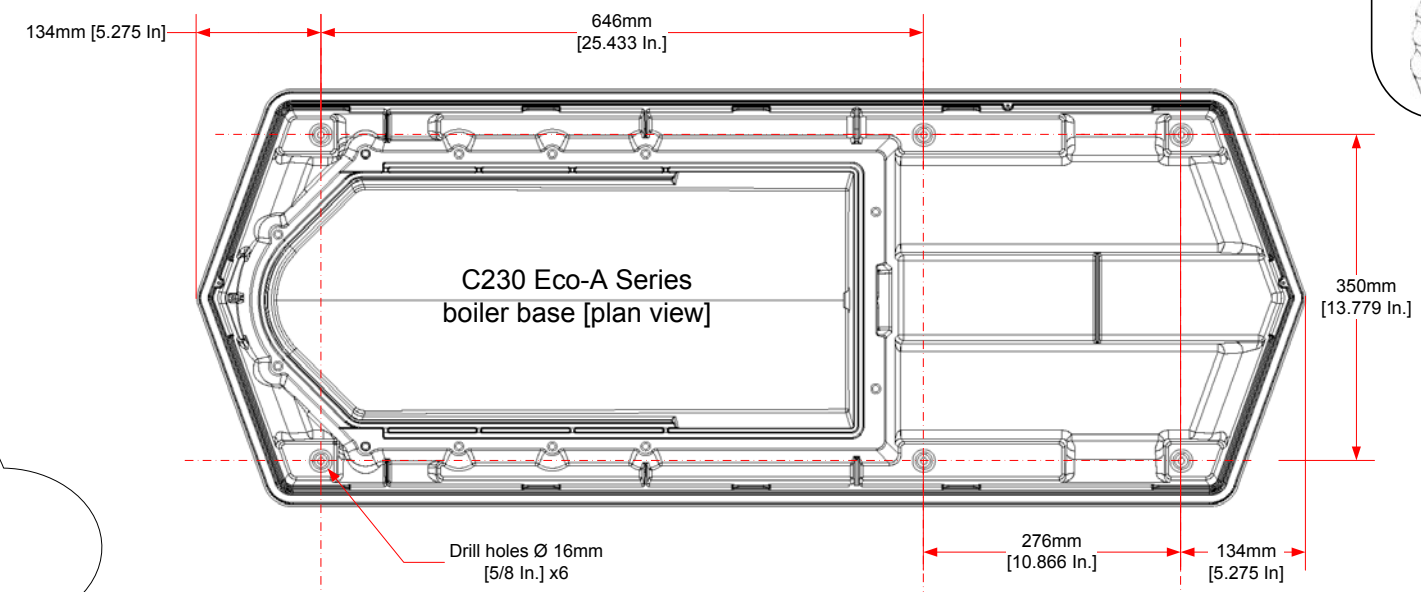
Unisorb® Vector Anchor bolt EM-12
Material: Forged Steel

a. (anchor dia.) 24mm (1 In) ref.
b. (Bolt thread length) 30mm (1 3/16") ref.
c. (anchor length): 70mm (2 3/4") ref.
d. (thread dia.) M12 (0.47 In) ref.
L (overall length) 150mm (6 In) ref.
W Hex nut: 19mm (3/4") ref.

**C230 Eco-A Series
Anchoring system components**

- Unisorb - Vector Anchor bolt EM-12 (M12 x 150mm) [x1]
- M12 - 5mm thick washer [x3] 9612-0102
- M12 tension spring [x1] 9754-0120
- M12 lock/serrated washer [x1]

Component shown for one complete anchor, x6 for boiler



Warning Please follow the installation instructions provided with the grout for proper use.



DDR Americas Inc. Anchoring Kit Part # 9-230-SAS-001